



SOTEX.PRO

ПРОМЫШЛЕННОЕ ОКРАСОЧНОЕ
ОБОРУДОВАНИЕ

ПРОИЗВОДСТВО, ПОСТАВКА, СЕРВИС

K I - N G - X L - 8 0[®]



SOTEX.PRO
+7 495 540 42 40



!

!



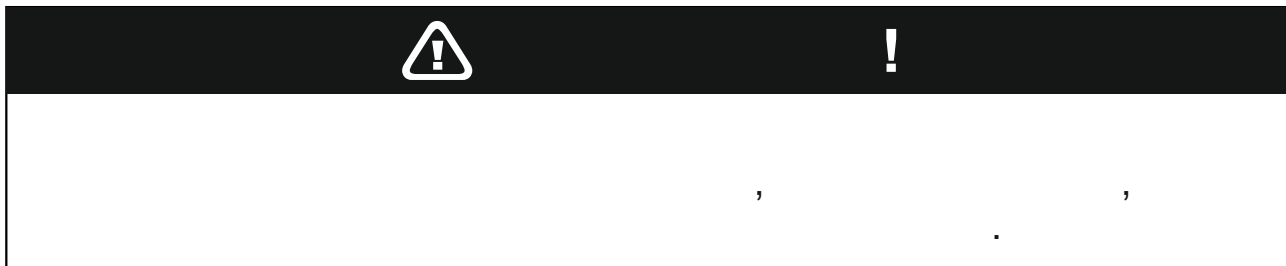
!

.

















1.		4
2.		7
	2.1.	7
	2.2.	7
3.		8
4.		8
5.		9
	5.1.	9
	5.2.	9
	5.3.	10
	5.4.	10
6.		11
	6.1.	11
	6.2.	12
	6.3.	13
	6.4.	13
	6.5.	14
	6.6.	15
	6.7.	15
7.		16
8.		16
9.		16
10.		17
11.		17
	11.1.	17
	11.2.	17
12.	72100	18
	12.1.	18
	12.2.	20
	12.3.	22
13.	PRO-681	23
	13.1.	23
	13.2.	24
	-	
	-	
	-	
	13.3.	26
14.	:	27
	14.1.	27
	14.2.	27
	14.3.	28
	14.4.	28
15.		29
16.		30
17.		31
18.		32

1.



«!»

	
  	<p>(,)</p> <p>•</p> <p>•</p> <p>•</p> <p>•</p> <p>•</p> <p>•</p> <p>•</p> <p>•</p> <p>•</p> <p>•</p> <p>().</p>
   	<p>•</p> <p>•</p> <p>•</p> <p>•</p> <p>•</p> <p>•</p> <p>•</p> <p>•</p> <p>•</p>

	
 	<ul style="list-style-type: none"> • • • •
	<ul style="list-style-type: none"> • •
	<ul style="list-style-type: none"> •
	

3.

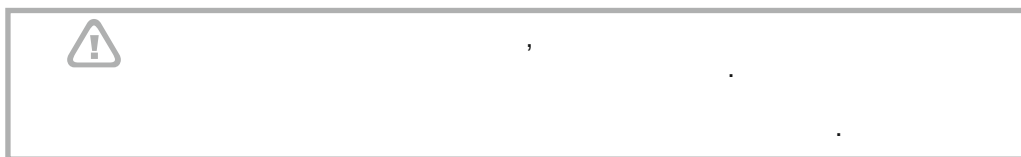
KI-NG-XL-80 :

-
-
-
-
-

60 mesh,

-
-
-
-
-

500



4.

	80:1
	10,8 /
	500
	3-7
	118
	85 77 142

5.

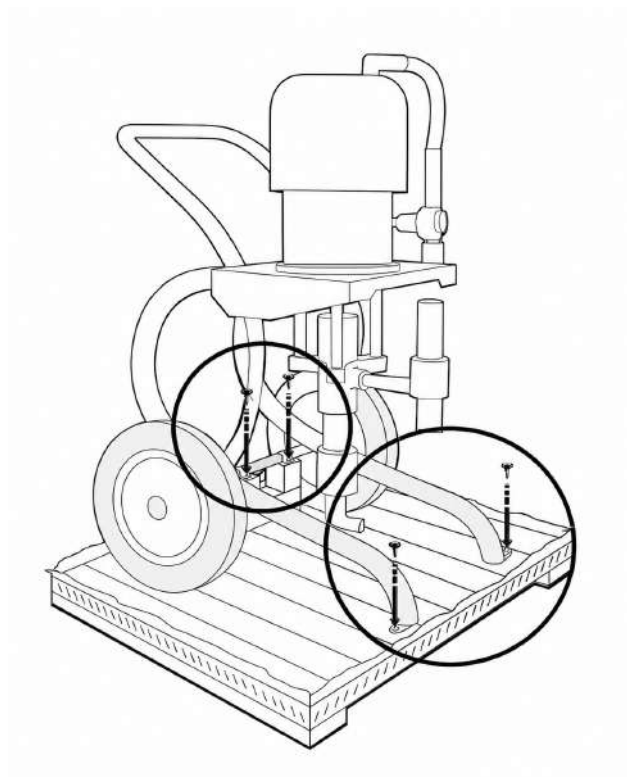
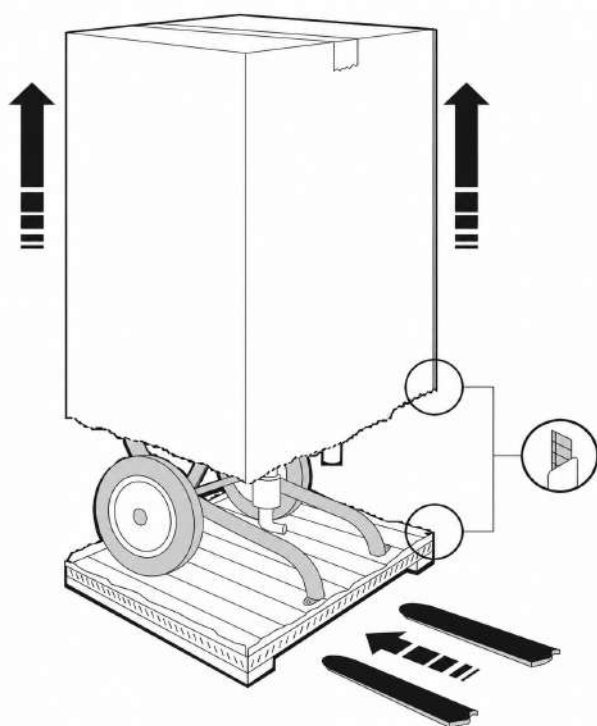
5.1



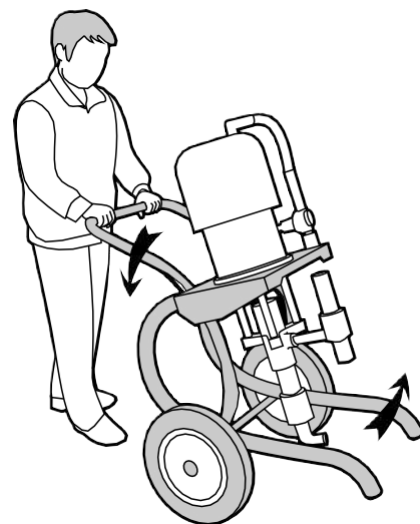
-
-
-
-
-
-
-

5.2

()



5.3

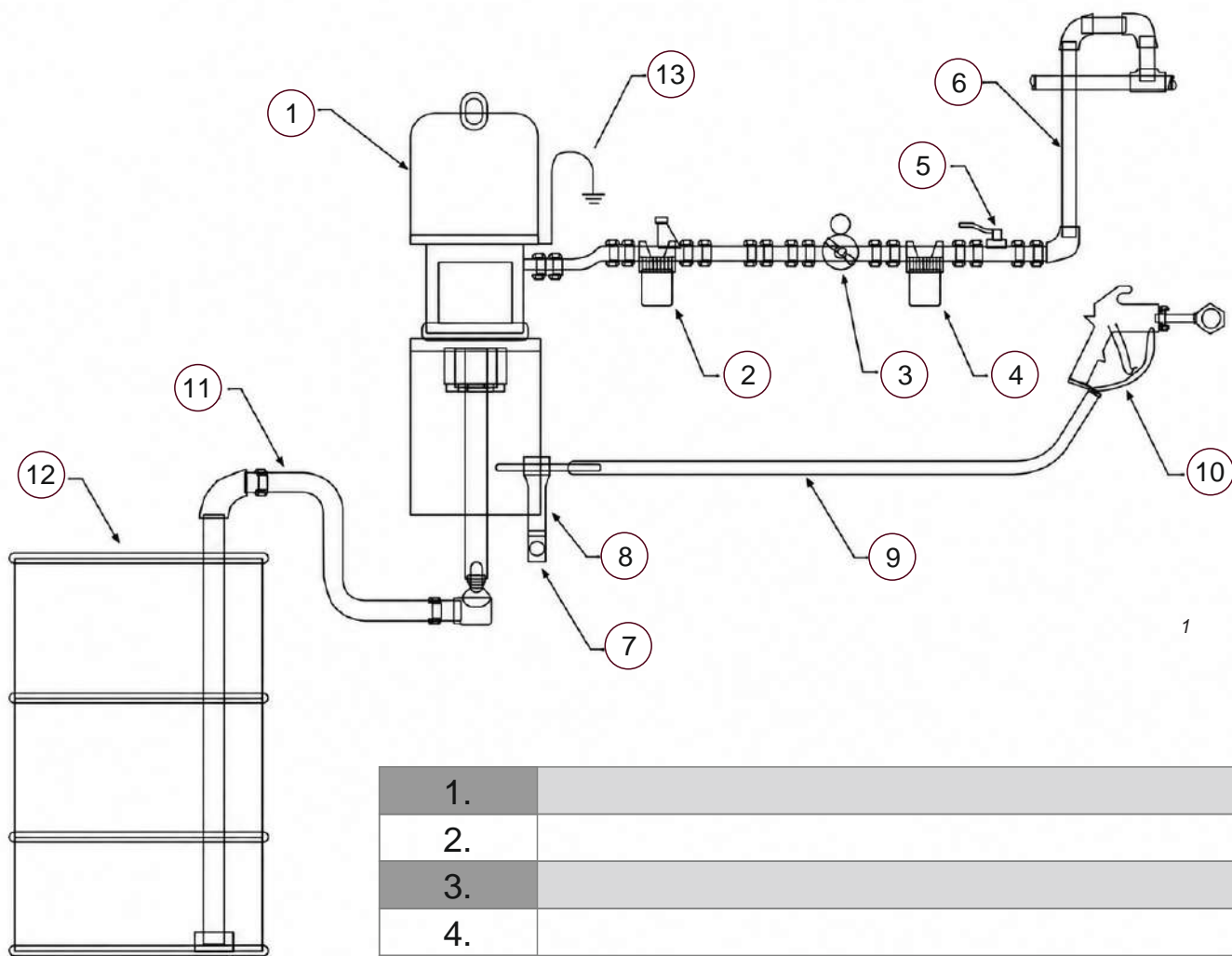


5.4

0 40°C.

6.

6.1



1.	
2.	
3.	
4.	
5.	
6.	
7.	
8.	
9.	
10.	-
11.	
12.	

6.2

1

2

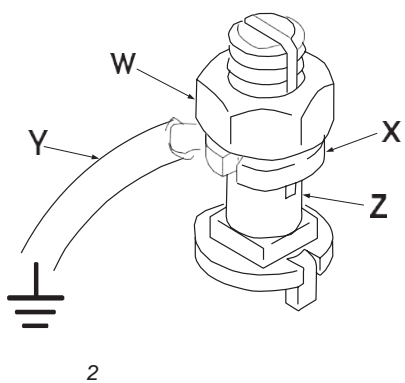
1,0 - 1,5 3/

7

-
-
-
-
-
-
-

3/4" (19) .

3



!

(1)	:	:	(. . 2).	
—				
(2)	:			
—				
(3)	:			
—				
(4)	:			
—				
(5)	:			
—				
(6)	():			
—				
—				
(7)	:	(,)		
—				

6.3



- 1
- 2
- 3
- 4
- 5
- 6
- 7

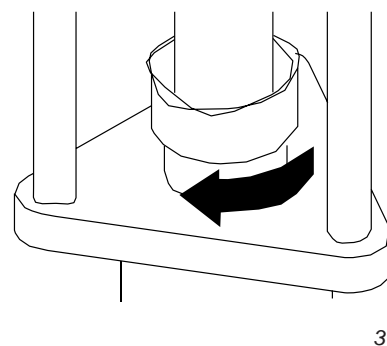
6.4

1/3

TSL.

34-41

. 3.





6.5

-
-
-
-

- 1
- 2
- 3
- 4
- 5
- 6
- 7
- 8
- 9
- 10
- 11



6.6

1

2

3

4

5

6

7

8

9

10

11

12

13

(10).

(5).

(7).

(11)

(12).

(5).

(10)

(7).

6.7

1

2

3

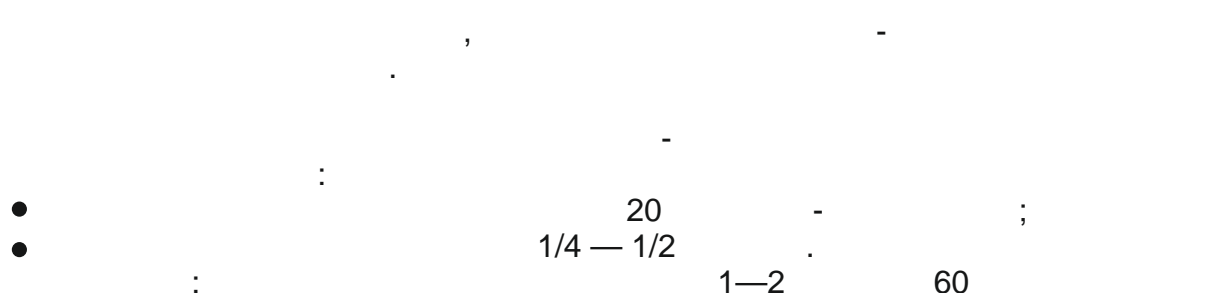




7.



8.



9.

+10°

10.



11.

11.1

- 1
- 2
- 3
- 4
- 5

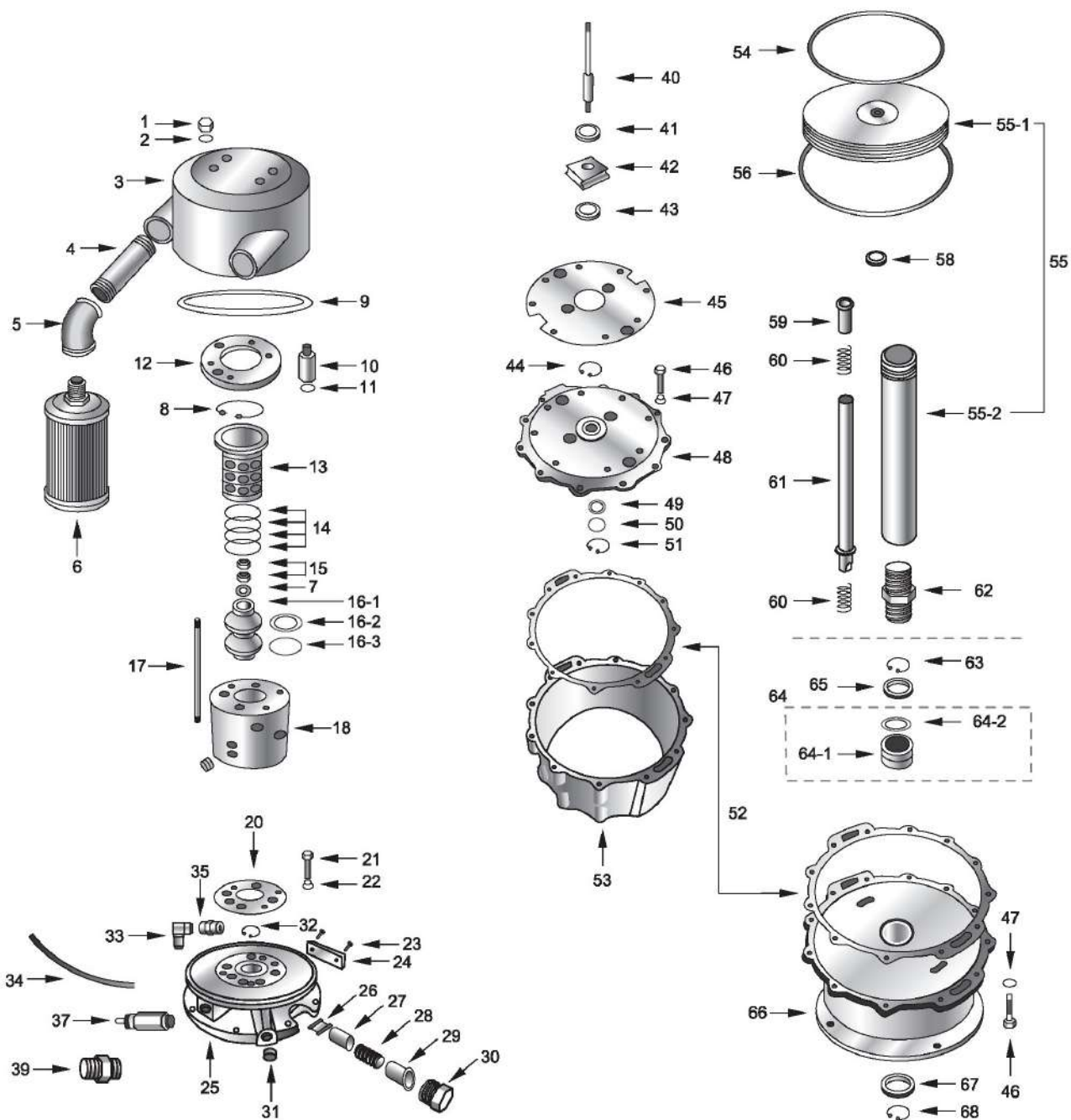
11.2

	1. 2. 3. , 0 , 4. TSL 5.
50	()
100	
300	
500	
1 000	

12.

12.1

72100



12.

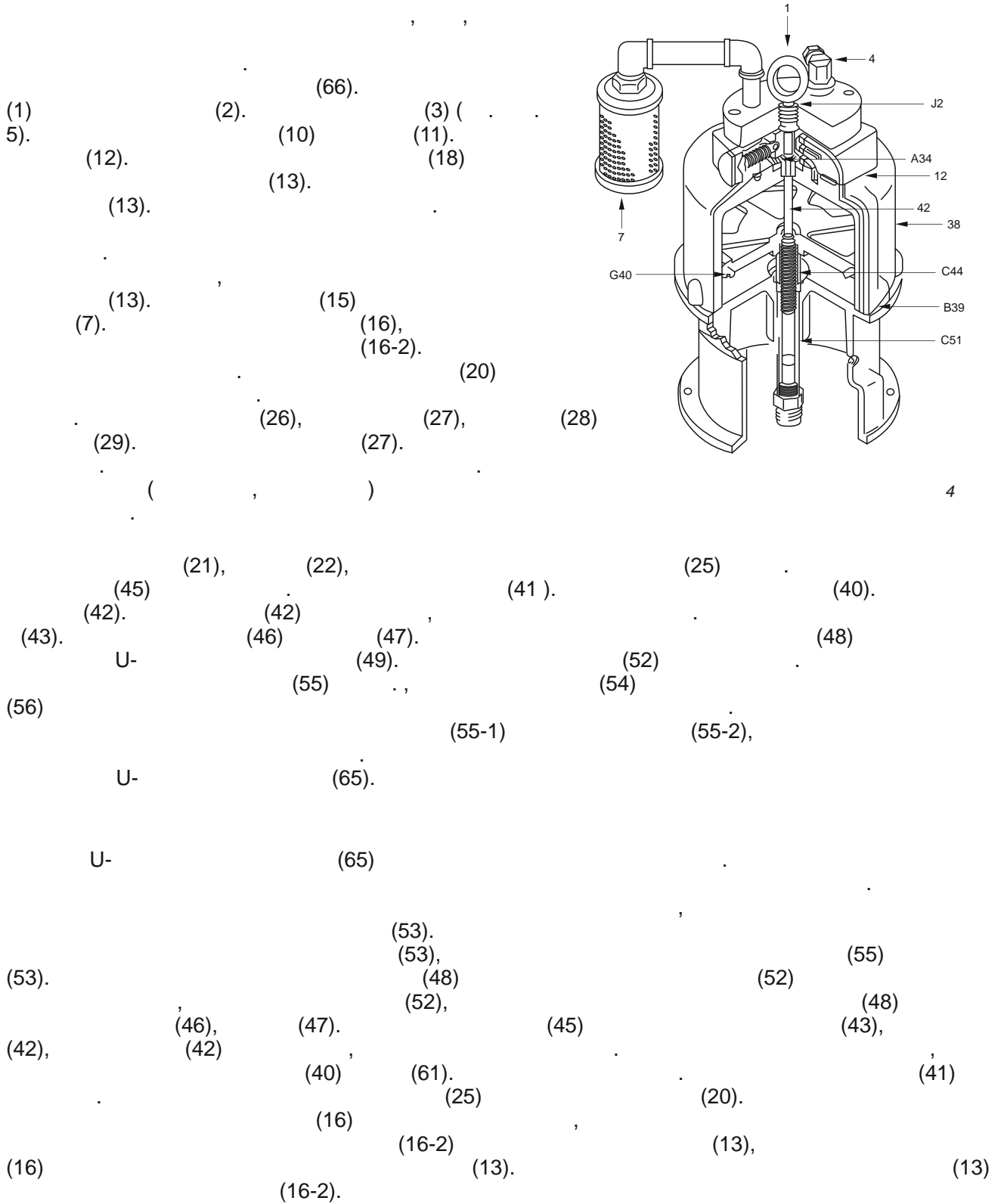
12.1

72100

1	72101		4	35	68153		1
2	72102		4	37	A70040	(1/2)	1
3	72103-A		1	38	G74002	1/4npt	1
4	68108-3		2	39	45225	(pt1' xpf1")	1
5	45505	1'	2	40	72140		1
6	68107		2	41	72141	a	1
7	A70002		1	42	72142		1
8	A70003		1	43	72143	b	1
9	72109-A		1	44	72144		1
10	72110		4	45	72145-A		1
11	72111		4	46	68110		24
12	72112		1	47	68111		24
13	72113		1	48	72148		1
14	72114		4	49	72149	U-	1
15	72115		2	50	72150		1
16	72116		1	51	72132		1
16	72116-1		1	52	72152		2
16	72116-2		2	53	72153		1
16	72116-3		2	54	72154	(t)	1
17	72117	-	4	55	72155		1
18	72118		1	55	72155-1		1
20	72120		1	55	72155-2		1
21	72121		8	56	72156		1
22	45603-2		8	58	72158		1
22	45607-1		8	59	72159		1
23	17126		2	60	72160		2
24	72124		1	61	72161C	()	1
25	72125		1	62	72162		1
26	72126		2	63	72163		1
27	72127		2	64	72164		1
28	72128		2	64	72164-1		1
29	72129		2	64	72164-2		2
30	72130		2	65	72165	U-	1
31	72131		2	66	72166		1
32	72132		1	67	45147		1
	72133	L- : (m) pt 1/4' x (f) pt/4'	1	68	45150		1
34	72134		1				

M73, RKP-AM73

12.2





(42), (43) (41) (49)
20-25 - (27-33 -).
(32)

(42) (41) (19)

4,634 . (117,7) (29), (22), (21) (20)
0,04
() () (P) . (1)
() (31) 14-18 - (19-24 -).
(42). . . 6 (23)
(24), (22).
(30) 0,04 . (1).

150 (43) - (203 -). (10,11),

(38) (14) (15)
(39) (16) (13)
(31)

(38) (41). (12).
(13)
(38) (47). (22).
(17) (18).
(12),
(6) (1). (18).

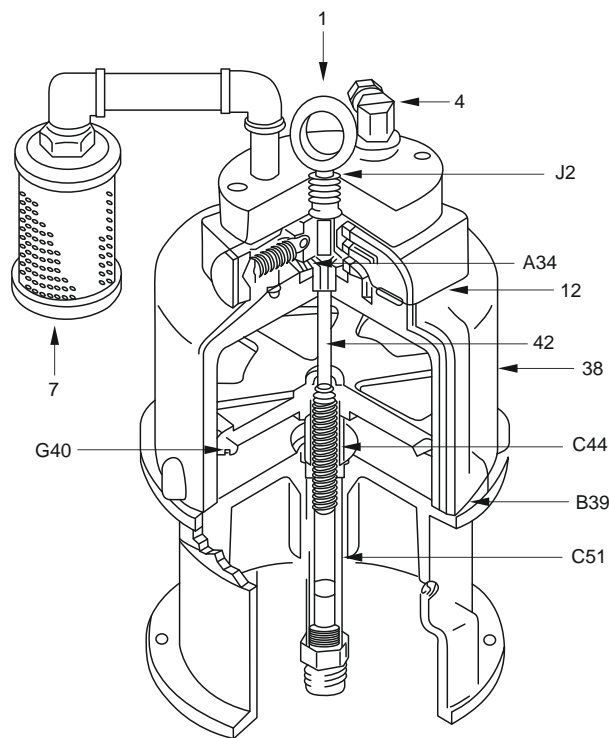
12.3

(4)

(12)

4.

		(34)
		(39)
	(51)	(44)
		(40)



4

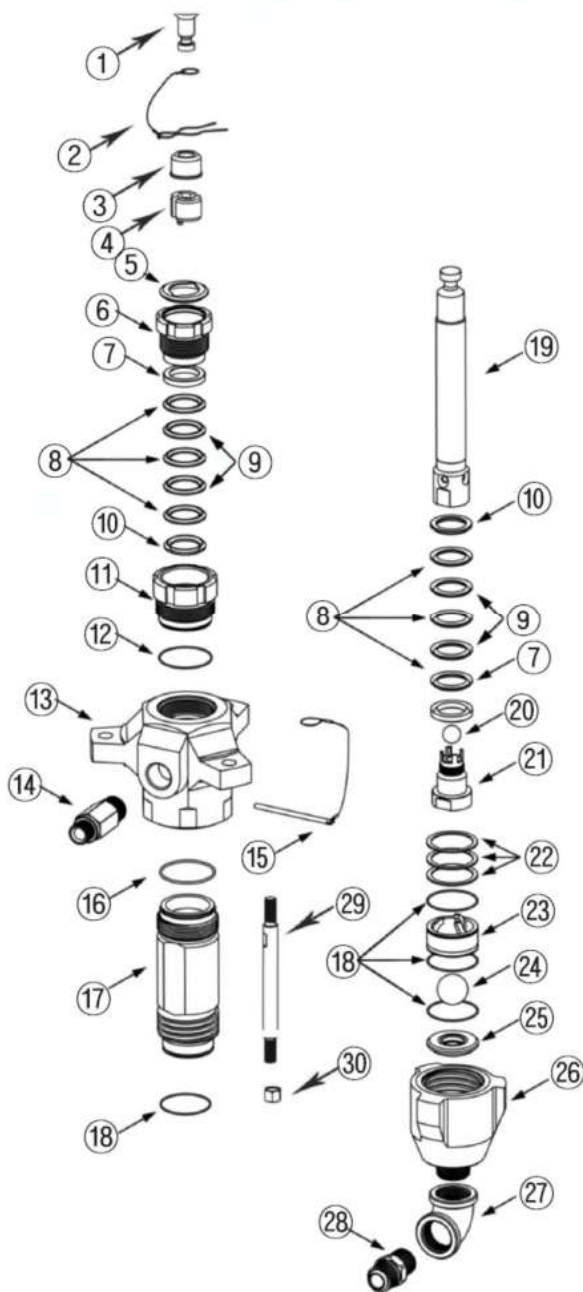
13.

13.1

PRO-681

PRO-681(DISPLACEMENT PUMP FOR 180cc)

: RKP-G70



1	HX45201		1	197341
2	RK-HS-202		1	244820
3	RK-HS-203		1	197340
4	RK-HS-204		1	244819
5	HX68205	180	1	247394
6	RKVG-K68	180	1	15K030
7	68207		2	244876
8	A70068	v-	6	244864
9	68206	v- ()	4	244870
10	68204		2	244882
11	RKCG-K68	180	1	197325
12	HX68212		1	244890
13	HX68213		1	197334
14	68209	(pt3/4"xpf3/4")	1	-
15	HX45214		1	244826
16	HX68216		1	244892
17	RKC-K68		1	197316
18	HX68218		4	244890
19	RKR-K68		1	24B822
20	68214	(3/4")	1	253029
21	RKPV-K68	180cc	1	24B827
22	HX68222		3	244855
23	RKO-K68	180cc	1	197307
24	45221		1	253031
25	RKIS-K68	180cc	1	196358
26	RKIN-K68	180cc	1	197303
27	HX45225	(1-1/4"x1")	1	-
28	45225	(pt1"xpf1")	1	-
29	HX45226		3	-
30	45209		3	-

5

RKP-G70.

13.2

1

2

3

4

(7).

1

(B).

2

3

4

5

6

7

13.

(1)

(2),

(9)

8.

(A) с

(7).

8
(2)

(1).

(7).

40-50

(54-

(9)
68 -).

145-155

(1)
(195-210 -).

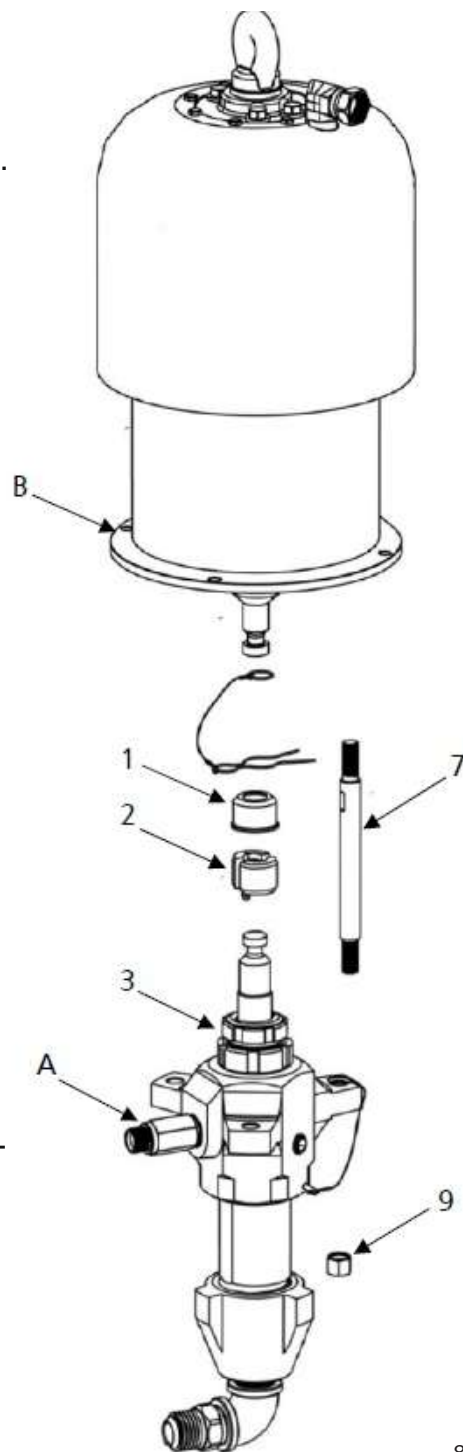
40

(2,8),

TSL

(3),

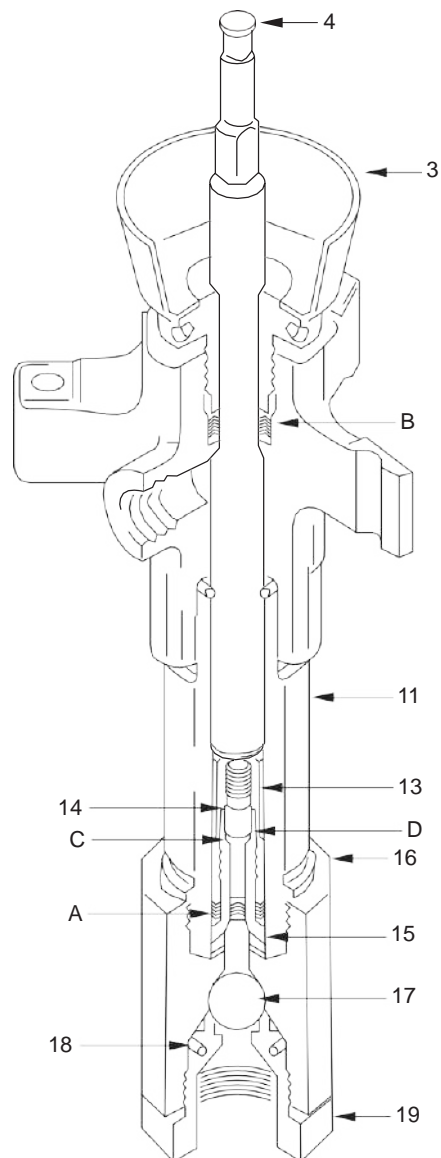
TSL



- 1
 - 2
 - 3
 - 4
- (E) (17), (16) (3) (16) (17) (17) (16) (11)



- 1
 - 2
 - 3
 - 4
 - 5
 - 6
 - 7
 - 8
 - 9
- (11) (12) (11), (15) (11), (15) (15) (15) (14), (13), (12) (12) (12) (13) (12). (14). (A), (14) (15). (D) (8). (3) (B)





13.3

		:
	,	
		:
	,	: : 1/2 TSL
,	,	
		:
		.
	23
	23
,		:23
,		:23
	23
	23
	23

, / ,

40psi=1,4-2,8).

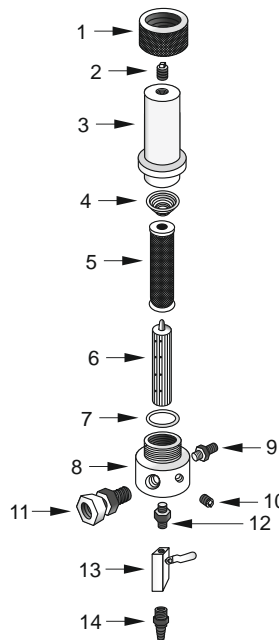
(20-

14.

14.1

FL45300

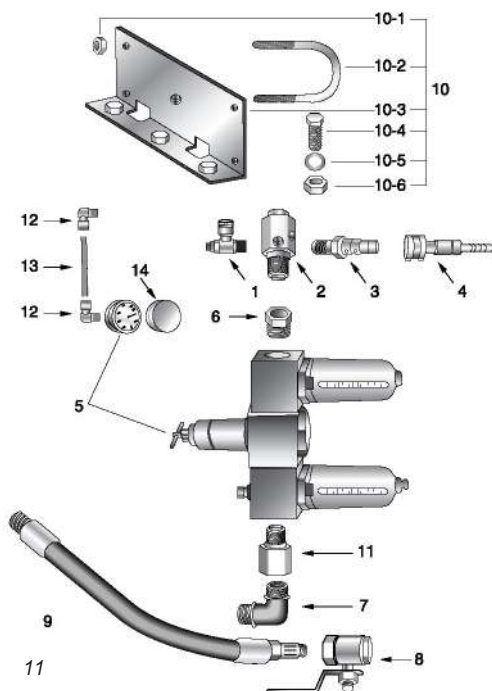
Sub Total	FL45300	3/4"	3/8"	500 bar.	
1	45301				1
2	45302				1
3	45303				1
4	45304				1
5	FL-IN-K60				1
6	FL-Support				1
7	45307				1
8	45308				1
9	45309	(bspt 3/8" xbspf 1/4")			1
10	45302				1
11	45311	(3/4")			1
12	45312	(bspt 1/4" xbspf 1/4")			1
13	45313	1/4"			1
14	45314				1



16

14.2

72400-PBS

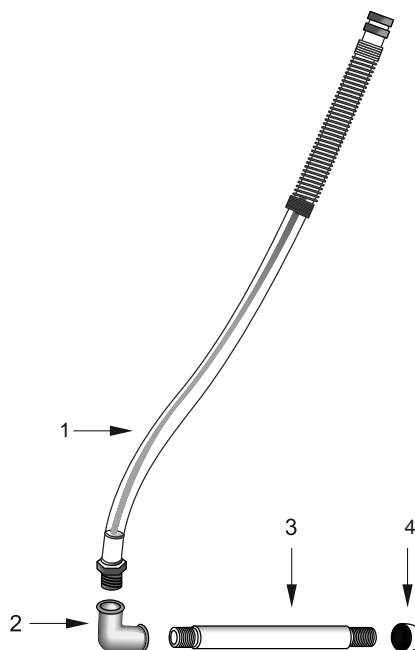


1	68401		1
2	68402		1
3	45406-1-A	3/4	1
4	45406-2-A	3/4	1
5	68405-PB		1
6	68405-PA		1
7	68409-PB	1"	1
8	45402-A		1
9	A70045	(1": 400)	1
10	68406-PB		1
10	28209	()	4
10	45603-1		3
10	45603-2		3
10	45603-3		3
10	68406-1-PB	(parker)	1
10	68406-2-PB		2
11	A70046	(PT1 "M X PT1 "F)	1
12	55E340		2
13	A70010		1
14	A70011		1

14.3

45500(68500)/45S500

				-
1	45506	45S506S		1
2	45505	45S505S		1
3	45504	45S504S		1
4	FL-S-Cont-1/16			1

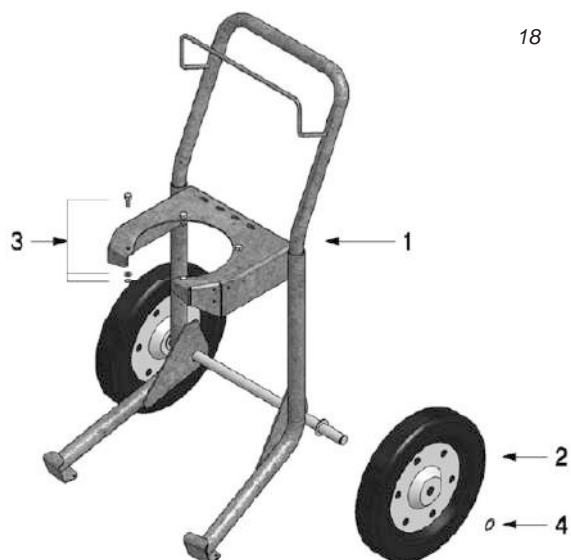


12

14.4

45600/68500

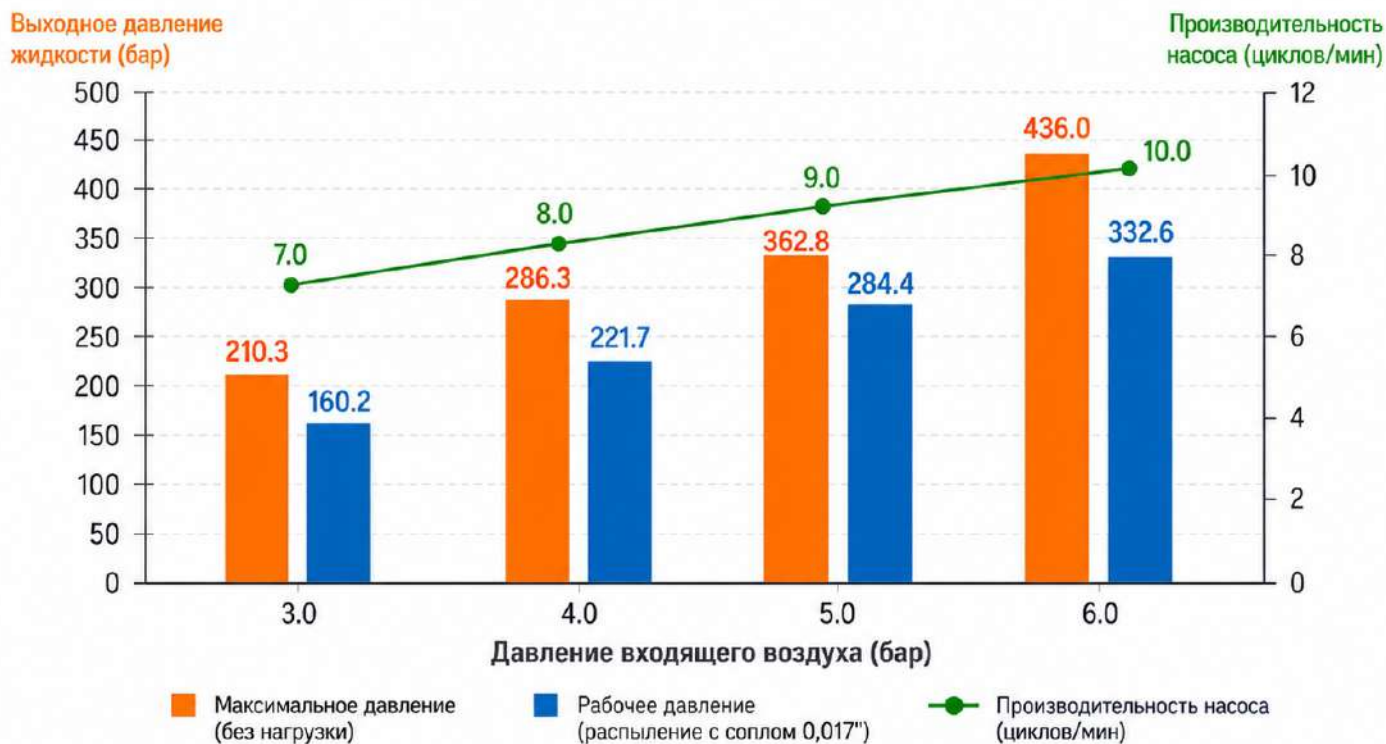
				-
1				1
2		15"×3"		2
3				1
3-1				4
3-2				4
3-3				4
4				2



18

ГРАФИК РАБОЧИХ ХАРАКТЕРИСТИК НАСОСА

Зависимость выходного давления и производительности насоса от давления входящего воздуха



Максимальное давление (без нагрузки)
Максимальное давление жидкости, которое насос может развивать при данном давлении воздуха.



Рабочее давление (распыление с соплом 0,017")
Реальное рабочее давление при распылении с соплом диаметром 0,017 дюйма.



Производительность насоса (циклов/мин)
Количество рабочих циклов насоса в минуту при данном давлении воздуха.



ВАЖНО: Чем выше давление воздуха на входе, тем выше выходное давление и производительность насоса.
Рекомендуемое давление воздуха: 0,2 – 0,6 бар.

SOTEX®

sotex.pro

+7 (800) 500 08 91,

+7 (495) 540 42 40

info@sotex.pro



SOTEX.PRO

**ПРОМЫШЛЕННОЕ ОКРАСОЧНОЕ
ОБОРУДОВАНИЕ**

ПРОИЗВОДСТВО
ПОСТАВКА
СЕРВИС



SOTEX, -

SOTEX.PRO

+7 495 540 42 40

